



Abraquest: Getting Started

Copyright © 2004-2021 Spherical Software Limited. All Rights Reserved.

Abraquest: Getting Started

User Guide

by Spherical Software Limited

Abraquest: Getting Started

Copyright © 2004-2021 Spherical Software Limited. All Rights Reserved.

Table of Contents

Foreword	5
Part I Introduction	7
1 About this Document.....	8
2 How Abraquest Works.....	9
Part II Installing Abraquest	11
1 Run Abraquest for the First Time.....	13
2 Problems During Install?.....	14
Part III Removing the Demo Database	16
Part IV Next Steps	19
1 Entering Abraquest Online Information.....	20
2 Problems with Abraquest Online?.....	22
3 Getting Started.....	23
Part V Further Information	25
1 Abraquest Admin Install.....	26
SchoolLibraryConfig.xml	27
Index	0

Foreword

Part



1 Introduction

Welcome to the Abraquest Getting Started Guide.



Abraquest is produced and maintained by Spherical Software Limited. This documentation and software is copyright (c) 2014-2021 Spherical Software Limited. All Rights Reserved.

www.abraquest.co.uk
www.sphericalsoftware.com

Document Version: 3.0.0.0
12th January 2021

1.1 About this Document

This document contains information on how to set up Abraquest.

It is aimed at those who have purchased Abraquest and are installing it up for the first time. If you have not purchased, please refer to the Abraquest Trial Getting Started Guide.

Please note: some of the screen prints may be slightly out of date when viewed in this document, although we should have made the important changes with each release of the software. If in doubt, contact us at support@abraquest.co.uk. If this document or the software needs making clearer, we are always happy to oblige and include suggestions in a future Abraquest release.

1.2 How Abraquest Works

Abraquest is database software that stores information on every book in your library including every single time a book is borrowed or returned.

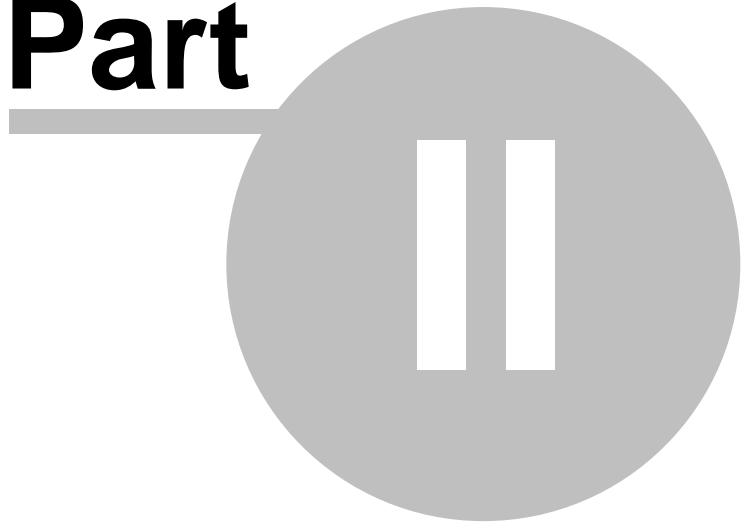
In order to do this we provide you with school barcodes to stick on the inside cover or back of each book to supplement the ISBN barcode on each book. This gives each of your books a unique number within your school.

When setting up the system for real, at system set up time each book is scanned into the system using a process called "Add Books" and is essential unless you are copying the data from another library system.

Whenever a book is removed from the school premises it is "Issued" and when it comes back, it is "Returned" by scanning the book barcode.

N.B. If you are looking at the trial software, there is a "demo" database with approx 4000 fictitious books so there is no need to add books to get Abraquest to work in this case.

Part



2 Installing Abraquest

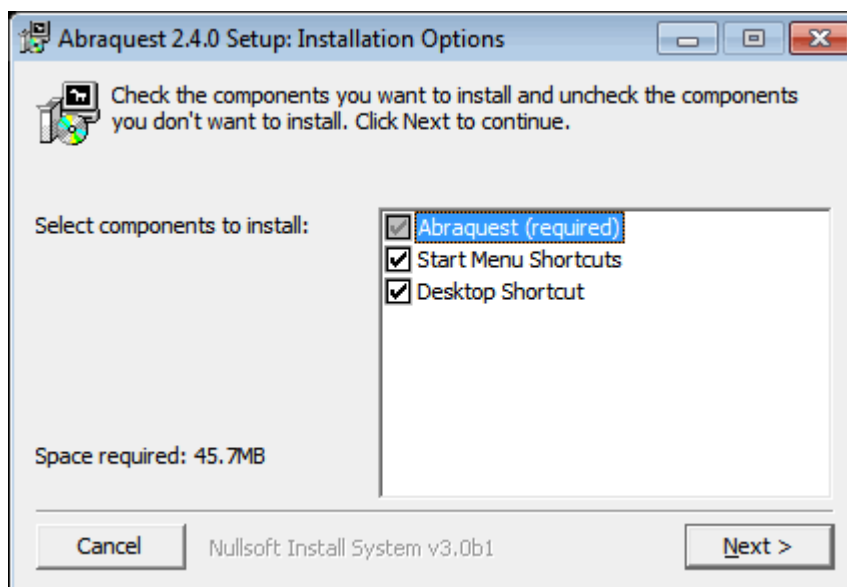
If you are installing a trial, you will have requested the trial via the home page at www.abraquest.co.uk

If you have purchased, the appropriate link will have been emailed to you together with licence details and username and password details for Abraquest Online.

When downloading you may get a warning message saying that the software is signed by Spherical Software Limited. This is normal.

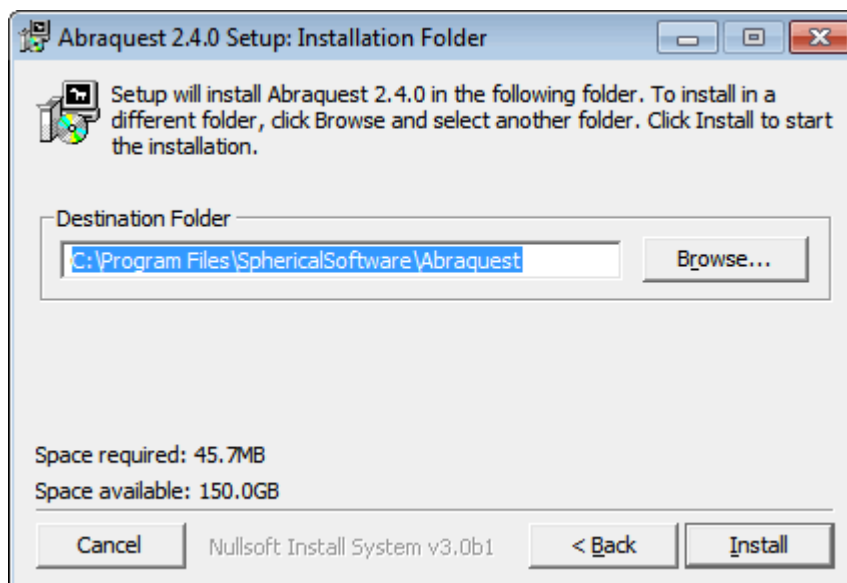
To install Abraquest on your PC, you need permission to install software from your IT department. If any problems occur during the following few steps, please refer to the next section.

Once you have downloaded, you should unzip and then run the downloaded file and the first page of Abraquest Setup will appear:



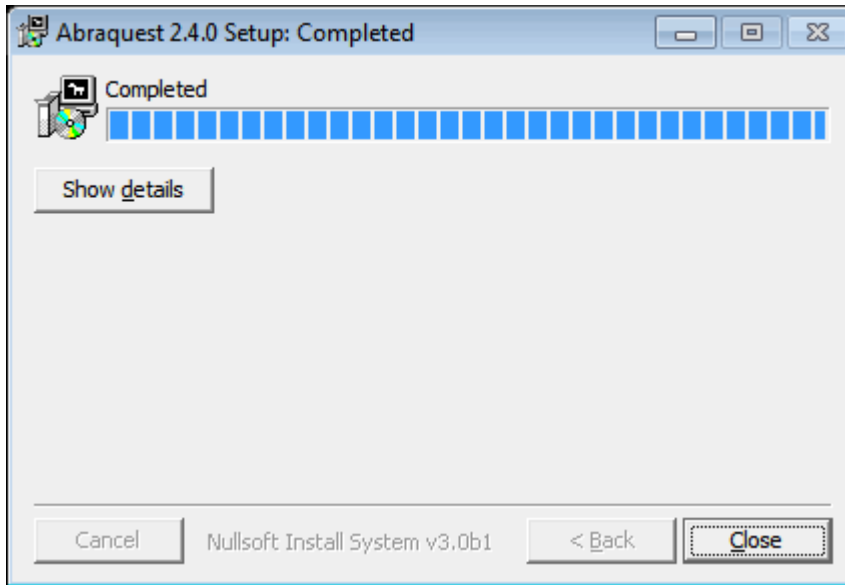
Abraquest Setup Page 1

Press Next.



Abraquest Setup Page 2

Press Install. The final setup page appears:

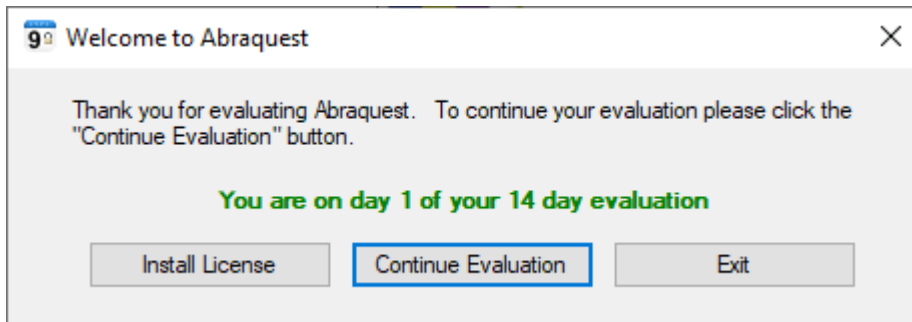


Abraquest Setup Page 3

Abraquest is now installed and will have put an icon on your desktop and is ready to use.

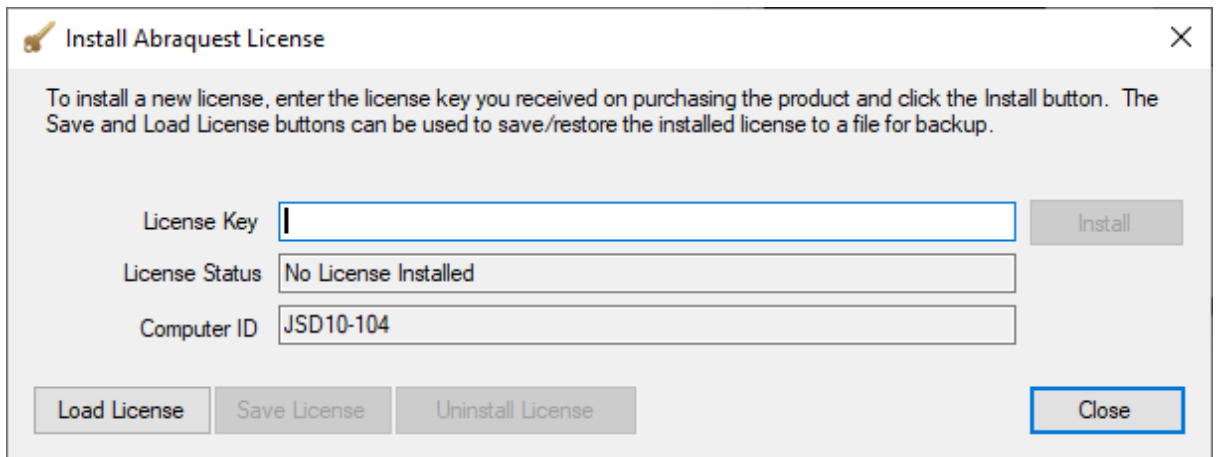
2.1 Run Abraquest for the First Time

The first time you run Abraquest it will prompt you for a licence key.



Install licence dialog

If you have a licence key, you should click **Install Licence**:



Install licence 2 dialog

Enter the licence key provided and click **Install**. Abraquest is now licenced.

N.B. In the event of any problems at this stage please email support@abraquest.co.uk

2.2 Problems During Install?

In the event of your not being able to install software from the Windows user that is using the library PC, you should call your IT support.

The most likely problem is not having permissions to install Abraquest from the Windows user you are currently using, but IT should be able to diagnose with the help of our support if required.

Please feel free to email support@abraquest.co.uk for advice, this might save you time, but we still may have to call IT.

Part



3 Removing the Demo Database

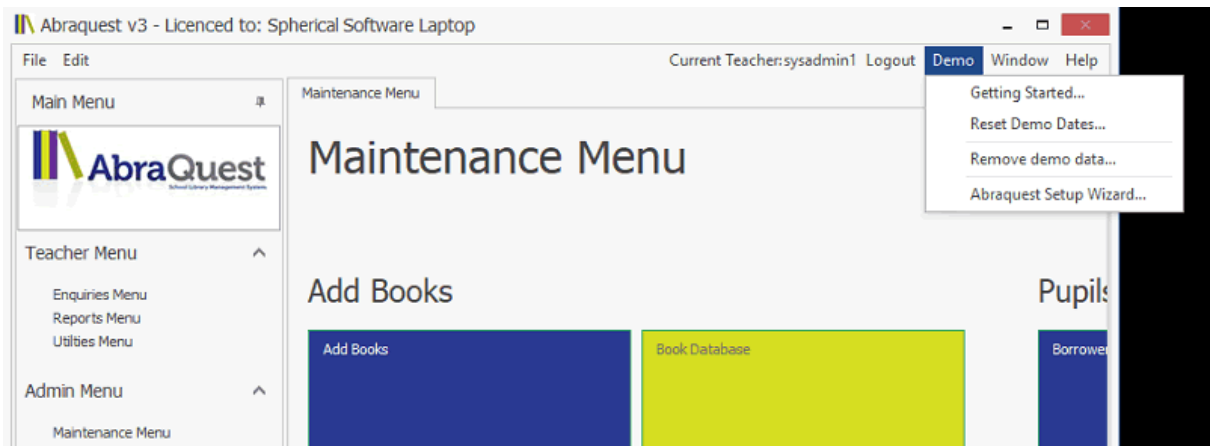
When first installed, Abraquest is installed with a demo database with 4000 books in it to allow trial users to see the features of Abraquest.

You must remove this before starting using Abraquest otherwise your data will be mixed up with the demo data.

To do this, do the following:

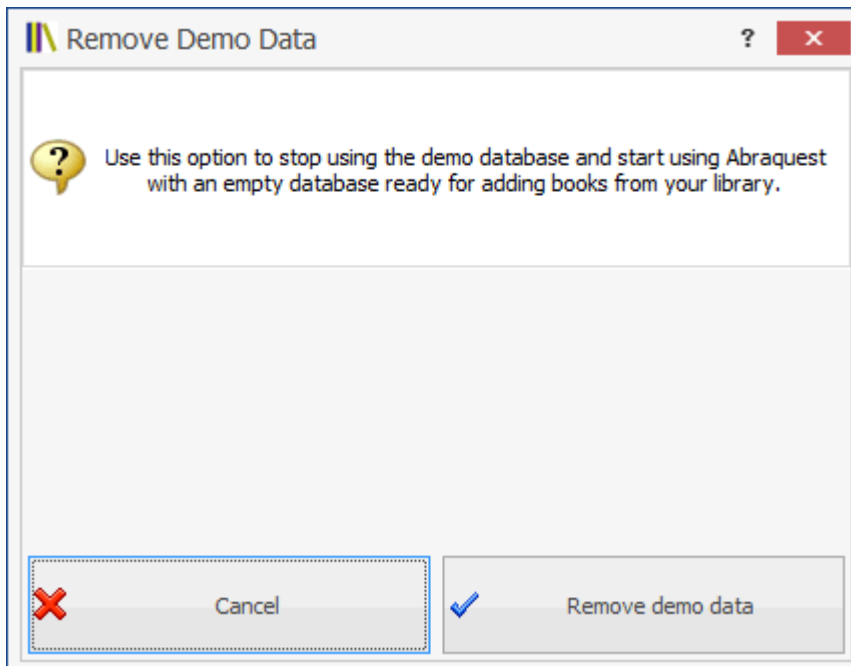
Login to Abraquest using username **sysadmin1**, password **sysadmin1**

Click the Demo menu at the top to open the demo menu as follows:



Demo Menu

Choose "Remove Demo Data..." (the ... means there is a further form coming up). The following appears:



Remove Demo Data Dialog

Click **Remove demo data** to remove the demo data and leave Abraquest with an empty database, otherwise click **cancel**.

Part

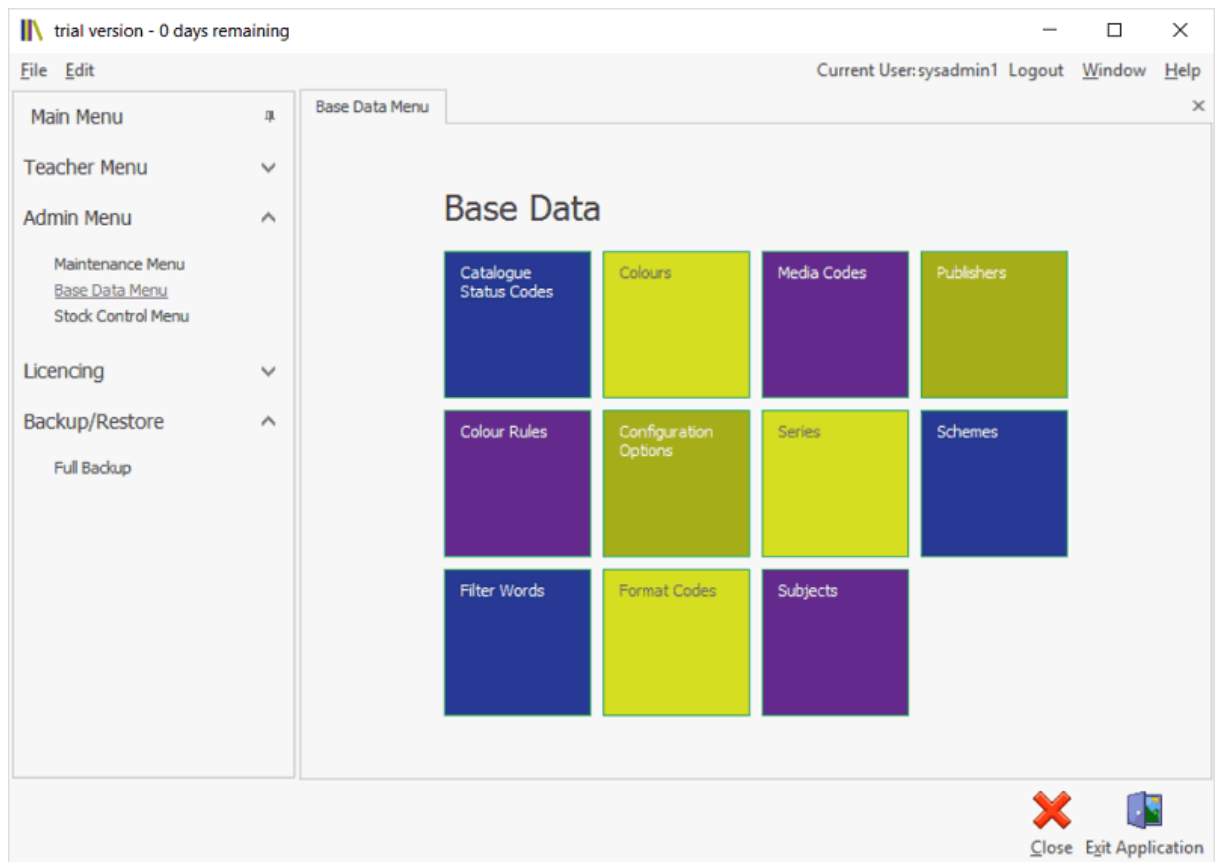


4 Next Steps

Please read on to find out how to enter Abraquest Online information and then continue on with the setup of Abraquest.

4.1 Entering Abraquest Online Information

Login as **sysadmin1**, password **sysadmin1** and go to the Base Data Menu:



Base Data Menu

Choose **Configuration Options**. The following appears:

Abraquest - Licenced to: Spherical Software Laptop

File Edit Current Teacher:sysadmin1 Logout Demo Window Help

Maintenance Menu Base Data Menu Base Data: Config Options

Main Menu

AbraQuest
School Library Management System

Teacher Menu

Enquiries Menu
Reports Menu

Admin Menu

Maintenance Menu
Base Data Menu
Stock Control Menu

Licencing

Backup/Restore

Backup / Restore Menu

Barcode Options

Max Length 8 Allow Alphas?
Zeros Length 6
Edit Mask

Abraquest Online Username / Password

Username
Password
Test

Additional Options

General Optional Features Optional Book Columns Notes/Labels Unattended Issue>Returns Libr. < >

Database Version 3.0.0.0 Year End Option
 Import
 Year End
 Both

Is Demo Database? (tick if Yes)

Borrow Days 7

Return on Certain Day? (tick if Yes) Default Books Allowed 2

Day to Return Friday

Lost Books Fixed Price (tick if Yes) Abraquest Automated Backup

Lost Books Price Backup on Exit? (tick if Yes)

Use Checklists? (tick if Yes) Years to Save 1

Abraquest Online Information

Customer Name
Software Assurance Customer Since
Abraquest Online Expiry
Software Assurance Expiry
Online Backup Expiry

Last Updated By

Last Updated 14/08/2019 11:41 Updated By sysadmin1

Edit

Close Exit Application

Configuration Options

Press **Edit** and enter your username and password provided into the top right hand corner of the screen.

Once you have entered these, press **Save**.

You can then press the **Test** button which should result in the customer name and other information in the Abraquest Online Information section of the page showing.

4.2 Problems with Abraquest Online?

If you have any messages during the "Test" phase, it could be that your school firewall needs opening up to allow Abraquest to connect.

Its likely you will have to call your IT, but please email support@abraquest.co.uk for further help in this respect.

4.3 Getting Started

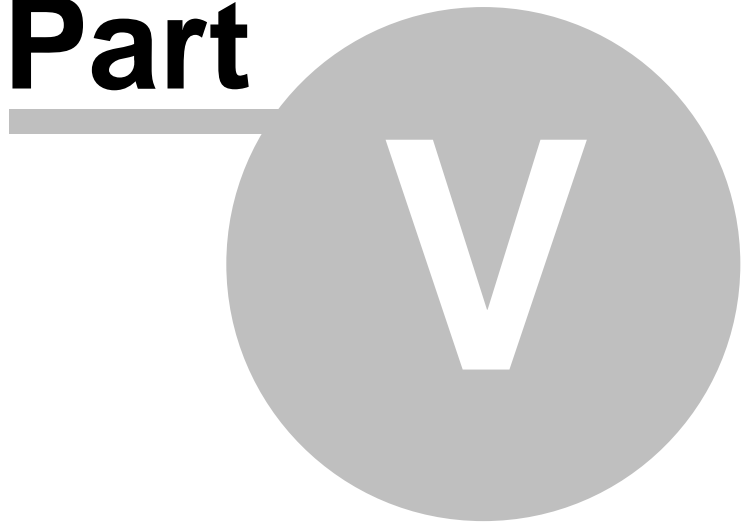
You either now have to review the conversion we have done from your old library system, or you have the task of entering books.

You also have the task of entering pupil names, which, if you have a system such as SIMS, you can export an Excel spreadsheet from this system and import it into Abraquest.

First though, you should run the Abraquest Setup Wizard, and review the questions within there.

You can refer to the Abraquest User Guide for details on how to do all of this or you can email support@abraquest.co.uk for a personalised consultation on next steps. We can do this online via Zoom or via email or telephone as you prefer.

Part



5 Further Information

Please remember we are always here to help if you have any questions.

The software author welcomes all feedback and suggestions, we are available via the following contact details:

Web: www.abraquest.co.uk

Tel: 0800 133 7410

Email: support@abraquest.co.uk

Spherical Support website: <https://help.sphericalsoftware.com>

If you would like guidance on how to install on a network, check your firewall settings, move Abraquest to another PC, this and many more questions are available on the support website.

5.1 Abraquest Admin Install

If your network requires IT to install Abraquest, then this page explains the steps usually required. Any questions, please email support@abraquest.co.uk for further advice.

Step 1: Log in as administrator (or a suitable Windows user capable of installing programs).

Step 2: Download and install the Abraquest 30 day trial.

Step 3: If you have a licence key, then install it now.

Step 4: Review Settings in `c:\program files\spherical software\abraquest\db\schoollibraryconfig.xml`. If you are considering moving the Abraquest database elsewhere this is the file you need to update.

Step 5: Log in as the usual librarian windows login.

Step 6: Ensure Abraquest Runs without the Run as Administrator.

Step 7: If Abraquest won't run without Run as Administrator, and this is a problem, e.g. Windows asks if the user wants to change the PC when running Abraquest please contact support@abraquest.co.uk.

In the event of any problems, you may have to re-enter the licence key again (which probably means calling our support to allow this), or more likely checking file permissions on the database, security and / or the licence file (Which will come up as part of the error message if this is the problem). The Windows user for the library must have write access on the database and the licence file in order for Abraquest to work correctly.

Once these are set up on a PC, then they are unlike to change. If run as administrator is set, then whoever installs updates must be aware so that this can be rechecked when new updates are installed. However as related. Run as Administrator isn't necessary for Abraquest after the initial run/licence key setup.

Finally, if the library user cannot install software the ManualUpdateCheck option needs setting in `SchoolLibraryConfig.xml`. This file can be copied between library PC's (if you have more than one).

5.1.1 SchoolLibraryConfig.xml

This file is the school library configuration file and it lives in c:\program files\spherical software\abraquest\db

It contains certain settings to tell Abraquest where its database is, etc., as detailed below.

Please note: this help page and this file is for IT administrators. If you are a library user, you probably don't need to worry about it! Please email support@abraquest.co.uk if you have any queries.

This file is in XML format which is a format only IT professionals and other strange people understand. You have to be weird to know how to update this file, and a single spelling mistake can stop Abraquest from working until the spelling is corrected, so if you do not, you probably need to email support@abraquest.co.uk for further advice.

It contains the following keys, some of which may not be in every file:

Key	Notes
DatabaseName	Full path to the database, don't forget the \\ (or better still, map a drive) if its on a network
WorkgroupName	Full path to the workgroup file, don't forget the \\ as per above
DefaultBackupDir	If you are not using Abraquest Automated Backup and require the user to do daily backups (i.e. the network doesn't automatically do it), then enter the full path of the folder to use as a backup directory. Don't forget the library user needs write access to this folder.
DefaultUserId, DefaultPassword	Please leave as default for now.
AbraquestOnlineEnabled	Should be true, only set to false for schools that don't have access to the internet.
AutomaticUpdateCheckEnabled	True to allow updates, false just for a message to tell IT to install an update.
AccessCheckerEnabled	Leave as true, this checks that Abraquest has permission to write to its database on startup.
ManualUpdateInstallation	Normally false (in lower case). Set to true if the library user cannot install software updates (due to network restrictions or other reasons).
BackupQuestionEnabled	If you want to disable the backup question when Abraquest exits, ensure this key is added and contains false in lower case as the value.
DisableSupportEmails	Set to true if your network doesn't allow emails to be sent from the library PC.

There are a number of other valid values not documented here which are used in support scenarios. Please do not delete any that you may see in this file without contacting support@abraquest.co.uk first. You are welcome to take a copy of it and install it on any PC's in your network that require Abraquest, or for circumstances e.g. when you upgrade to a new version of Windows.

Most of these options can be maintained from the Abraquest system itself, by logging in as sysadmin1, and choosing Configuration options on the Base Data menu:

Abraquest - Licenced to: Spherical Software Laptop

File Edit Current Teacher:sysadmin1 Logout Demo Window Help

Maintenance Menu Base Data Menu Base Data: Config Options

Main Menu

AbraQuest
School Library Management System

Teacher Menu

Enquiries Menu
Reports Menu

Admin Menu

Maintenance Menu
Base Data Menu
Stock Control Menu

Licencing

Backup/Restore

Backup / Restore Menu

Barcode Options

Max Length Allow Alphas?
Zeros Length
Edit Mask

Abraquest Online Username / Password

Username
Password

Additional Options

Notes/Labels Unattended Issue>Returns Library Service SchoolLibraryConfig.xml

Database Name
Workgroup Name
Default Backup Dir. ...

Abraquest Online Enabled? (tick if Yes) Disable Support Emails? (tick if Yes)
Automatic Update Check Enabled? (tick if Yes)
Access Checker Enabled? (tick if Yes)
Manual Update Installation? (tick if Yes)
Backup Question Enabled? (tick if Yes)

Abraquest Online Information

Customer Name Abraquest Online Expiry
Software Assurance Customer Since Software Assurance Expiry
Online Backup Expiry

Last Updated By

Last Updated Updated By

Edit Abandon Save

Base Data -> Configuration Options -> SchoolLibraryConfig.xml tab

